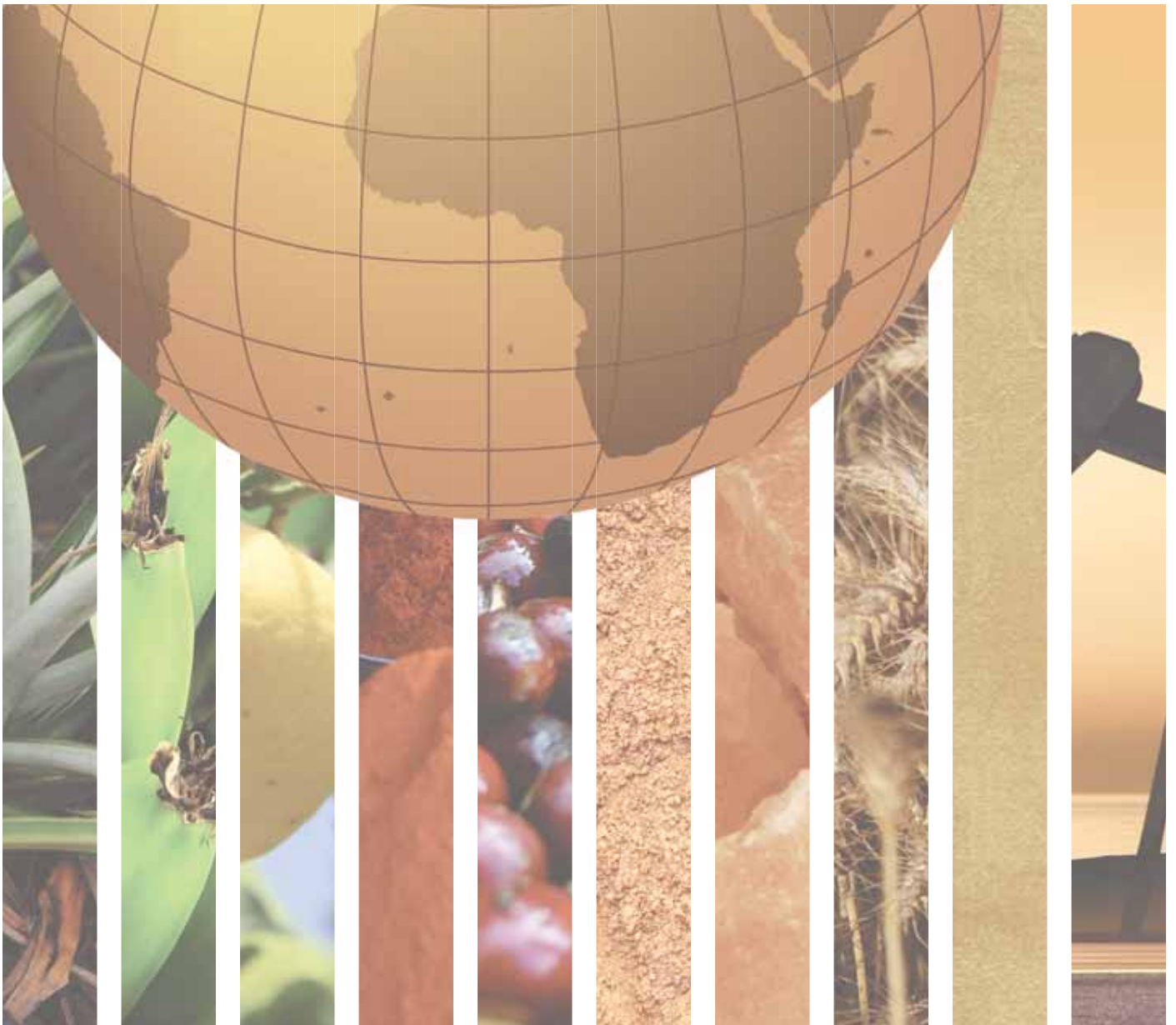


EASTERN ASIA





CHINA (INCLUDING HONG KONG SAR, MACAO SAR, AND TAIWAN PROVINCE OF CHINA)		DEMOCRATIC PEOPLE'S REPUBLIC OF KOREA	
GENERAL INFORMATION		GENERAL INFORMATION	
Total area (square kilometres), 2009	9,600,000	Total area (square kilometres), 2009	120,540
Agricultural area (as a percentage of total area), 2009	55	Agricultural area (as a percentage of total area), 2009	24
Population (1,000 inhabitants), 2010	1,372,148	Population (1,000 inhabitants), 2010	24,346
Labour force (1,000 workers), 2010	823,260	Labour force (1,000 workers), 2010	13,161
Women in labour force (as a percentage of total labour force), 2010	46	Women in labour force (as a percentage of total labour force), 2010	45
Labour force in agriculture (as a percentage of total labour force), 2010	61	Labour force in agriculture (as a percentage of total labour force), 2010	23
Women in agriculture (as a percentage of labour force in agriculture), 2010	48	Women in agriculture (as a percentage of labour force in agriculture), 2010	46
Gross Domestic Product (GDP) (in millions of US\$), 2010	6,558,013	Gross Domestic Product (GDP) (in millions of US\$), 2010	12,035
GDP by economic activity (as a percentage of GDP), 2009 (agriculture / industry / services)	10/45/45	GDP by economic activity (as a percentage of GDP), 2009 (agriculture / industry / services)	21/47/32
COMMODITY EXPORT DEPENDENCE		COMMODITY EXPORT DEPENDENCE	
Commodity exports (in millions of US\$ and as a percentage of merchandise exports), 2009-2010	151,360 (8%)	Commodity exports (in millions of US\$ and as a percentage of merchandise exports), 2009-2010	1,190 (49%)
Commodity exports (as a percentage of GDP), 2009-2010	2	Commodity exports (as a percentage of GDP), 2009-2010	6
Exports by commodity groups (as a percentage of total commodity exports), 2009-2010		Exports by commodity groups (as a percentage of total commodity exports), 2009-2010	
All food items	32	All food items	10
Agricultural raw materials	7	Agricultural raw materials	5
Fuels	24	Fuels	45
Ores, metals, precious stones and non-monetary gold	37	Ores, metals, precious stones and non-monetary gold	40
Three leading commodity exports (as a percentage of commodity exports), 2009-2010	35	Three leading commodity exports (as a percentage of commodity exports), 2009-2010	57
(334) Petroleum oils or bituminous minerals > 70 % oil	18	(321) Coal, whether or not pulverized, not agglomerated	33
(03) Fishery products	9	(281) Iron ore and concentrates	13
(667) Pearls, precious & semi-precious stones	8	(334) Petroleum oils or bituminous minerals > 70 % oil	11
Leading destination markets for commodity exports (as a percentage of commodity exports), 2009-2010	46	Leading destination markets for commodity exports (as a percentage of commodity exports), 2009-2010	97
China, China Hong Kong SAR, Japan, United States, Republic of Korea	12/11/9/8/6	China, Malaysia, China Hong Kong SAR, Brazil, EU (27)	70/23/2/1/1
Export concentration ratio	(2000) 0.077 (2010) 0.107	Export concentration ratio	(2000) 0.1044 (2010) 0.2524
Membership in international commodity bodies	INBAR, ICSG, ILZSG, ITTO, ICAC (Taiwan)	Membership in international commodity bodies	–
FOOD SECURITY		FOOD SECURITY	
Commodity import value (in millions of US\$ and as a percentage of merchandise import value), 2009-2010	545,652 (30%)	Commodity import value (in millions of US\$ and as a percentage of merchandise import value), 2009-2010	1,442 (48%)
Net food imports (in millions of US\$), 2010	35,812	Net food imports (in millions of US\$), 2010	180
MDG 1.1: Percentage of population below 1US\$ (PPP) per day, 1990/92 and 2007/09	62 - 16	MDG 1.1: Percentage of population below 1US\$ (PPP) per day, 1990/92 and 2007/09	n.a.
MDG 1.9: Percentage of the population undernourished, 1991 and 2007	18 - 10	MDG 1.9: Percentage of the population undernourished, 1991 and 2007	21 - 35



MONGOLIA		REPUBLIC OF KOREA	
GENERAL INFORMATION		GENERAL INFORMATION	
Total area (square kilometres), 2009	1,564,120	Total area (square kilometres), 2009	99,900
Agricultural area (as a percentage of total area), 2009	74	Agricultural area (as a percentage of total area), 2009	19
Population (1,000 inhabitants), 2010	2,756	Population (1,000 inhabitants), 2010	48,184
Labour force (1,000 workers), 2010	1,229	Labour force (1,000 workers), 2010	24,440
Women in labour force (as a percentage of total labour force), 2010	50	Women in labour force (as a percentage of total labour force), 2010	41
Labour force in agriculture (as a percentage of total labour force), 2010	18	Labour force in agriculture (as a percentage of total labour force), 2010	5
Women in agriculture (as a percentage of labour force in agriculture), 2010	48	Women in agriculture (as a percentage of labour force in agriculture), 2010	43
Gross Domestic Product (GDP) (in millions of US\$), 2010	5,582	Gross Domestic Product (GDP) (in millions of US\$), 2010	1,007,561
GDP by economic activity (as a percentage of GDP), 2009 (agriculture / industry / services)	23/32/45	GDP by economic activity (as a percentage of GDP), 2009 (agriculture / industry / services)	3/37/61
COMMODITY EXPORT DEPENDENCE		COMMODITY EXPORT DEPENDENCE	
Commodity exports (in millions of US\$ and as a percentage of merchandise exports), 2009-2010	2,295 (96%)	Commodity exports (in millions of US\$ and as a percentage of merchandise exports), 2009-2010	49,642 (12%)
Commodity exports (as a percentage of GDP), 2009-2010	47	Commodity exports (as a percentage of GDP), 2009-2010	5
Exports by commodity groups (as a percentage of total commodity exports), 2009-2010		Exports by commodity groups (as a percentage of total commodity exports), 2009-2010	
All food items	2	All food items	9
Agricultural raw materials	7	Agricultural raw materials	7
Fuels	11	Fuels	59
Ores, metals, precious stones and non-monetary gold	80	Ores, metals, precious stones and non-monetary gold	25
Three leading commodity exports (as a percentage of commodity exports), 2009-2010	75	Three leading commodity exports (as a percentage of commodity exports), 2009-2010	68
(283) Copper ores and concentrates; copper mattes, cemen	46	(334) Petroleum oils or bituminous minerals > 70 % oil	55
(971) Gold, non-monetary (excluding gold ores and concentrates)	15	(682) Copper	8
(287) Ores and concentrates of base metals, n.e.s.	14	(971) Gold, non-monetary (excluding gold ores and concentrates)	5
Leading destination markets for commodity exports (as a percentage of commodity exports), 2009-2010	98	Leading destination markets for commodity exports (as a percentage of commodity exports), 2009-2010	62
China, Canada, EU (27), Russian Federation	80/9/6/3	China, Japan, Singapore, United States, China Hong Kong SAR	27/13/8/7/7
Export concentration ratio	(2000) 0.3602 (2010) 0.4895	Export concentration ratio	(2000) 0.1572 (2010) 0.1488
Membership in international commodity bodies	–	Membership in international commodity bodies	IGC, ILZSG, ICAC, ISO, ITTO
FOOD SECURITY		FOOD SECURITY	
Commodity import value (in millions of US\$ and as a percentage of merchandise import value), 2009-2010	986 (36%)	Commodity import value (in millions of US\$ and as a percentage of merchandise import value), 2009-2010	163,034 (44%)
Net food imports (in millions of US\$), 2010	362	Net food imports (in millions of US\$), 2010	17,184
MDG 1.1: Percentage of population below 1US\$ (PPP) per day, 1990/92 and 2007/09	19 - 22	MDG 1.1: Percentage of population below 1US\$ (PPP) per day, 1990/92 and 2007/09	n.a.
MDG 1.9: Percentage of the population undernourished, 1991 and 2007	28 - 27	MDG 1.9: Percentage of the population undernourished, 1991 and 2007	5 - 5